

Bike About Tours

☑ Moderate fitness ☑ Medium fitness ☑ High fitness level

Numbers in brackets depicts wineries and activities location on maps. *Seasonal opening hours # Not always open



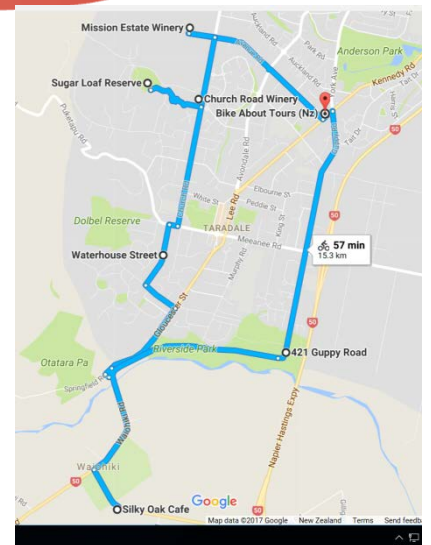
☑ Trail 503: Wine and Chocolates. 14 kms flat terrain

This cycle trail is ideal for a family – meandering along flat terrain mostly road way with some road pathways... (you can ride on the footpath)

5 minute cycle from Bike About Tours to Mission Estate Winery & Restaurant established in 1851 by the French Marist religious order, the Winery is New Zealand's 2nd to oldest winemaking concern still under the same management.

The cellar door has lots of historic photos on the walls to view which enables you walk through the history in their historic building

At the cellar door - wine tasting \$6 - includes a flight of 6 wines and a glass to take home



Mission Estate private group wine tasting - must be booked in advance (Min 10pax Max 40pax)
\$18.20pp A flight of 6 wines for taste & commentary detailing the 160+ year history (approx. 45min)
\$12.50pp A flight of 6 Wines (10 to 30 persons)

900metres down the road is Church Road Winery & Restaurant

Founded in 1897 on the same site it stands on today, Church Road has over 120 years of winemaking experience.

Cellar Door wine tastings, and an a la carte restaurant with food and wine matching. Our stunning park-like grounds play host to international events and are the perfect setting to relax with a glass of Church Road Wine. With an emphasis on Hawke's Bay sourced artisan products, the menu reflects Church Road's winemaking philosophy by combining traditional influences with innovative flair. Wine-matched a la carte menu, light meals, platters and cheeseboards are available.

Enjoy a Delicious lunch in our garden setting or indoor seated area.



Church Road Cellar Door - Wine Tastings

Provenance - \$ 5.00 – Taste a selection of wines from some of their signature varietals and vineyards across the region.

Innovation - \$10.00 – Take the road less travelled and try some of our more unique varietals and winemaking techniques.

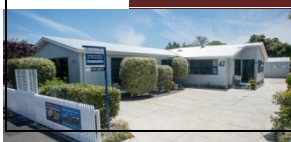
Prestige - \$15.00 – Treat yourself by tasting some of the finest wines we have to offer



Church Road Tours: Booking Essential for the following

11:00am – Versatility of the Grape Experience, 1.5 hour in length - \$70.00 per person,

This is your opportunity to discover the passion and innovation of our winemaking team. With glass in hand sample multiple ways that we are using grapes for more than just the production of wine. From pressed juice to balsamic vinegar and barrel aged spirit, enjoy an informative behind the scenes look at our world of wine and the adaptability of the versatile fruit. The experience concludes with a guided tasting of our award-winning range of wines.



Phone (06) 845 4836 Mobile 027 232 4355
P O Box 5115 or 47 Gloucester Street, Greenmeadows, Napier New Zealand.
Web: www.bikeabouttours.co.nz Email: info@bikeabouttours.co.nz
Web: www.greenmeadowsongloucester.co.nz Email: leedes@xtra.co.nz

Bike About Tours



☑ Moderate fitness ☑ ☑ Medium fitness ☑ ☑ ☑ High fitness level

Numbers in brackets depicts wineries and activities location on maps. *Seasonal opening hours # Not always open

Church Road Tours: Booking Essential for the following 3:00pm – Legacy and Winery Experience, 1 hour in length - \$35.00 per person,

Immerse yourself in the past, present and the future of Church Road with our Legacy and Winery Experience. Learn more about our winemaking philosophy as you sample some of our pre-release wines, enjoy the barrel halls, caves and historical underground museum finishing with an in depth tasting.



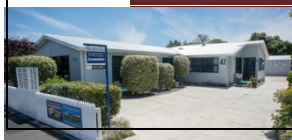
Walking Loop (see map on page 3) Lock your bikes at Church Road Winery: **Sugar Loaf Reserve** - your walk takes you to the summit for fantastic views, return via Halliwell's Walkway to Church Road Winery - allow 30 minutes return

Silky Oak Chocolate Company where you can watch the process of chocolate making, enjoy tasty food at the café and take time to meander around the amazing Chocolate Museum - Cost applies...

Attraction: Penny Madden Ceramic Studio, Otatara Pa Historic Reserve, Tree stump carving of golf players, #Waiohiki Arts Crafts , # Bay Wood Turney, # Nevaria Lavender

Lunch options: Church Road Winery, Mission Estate Winery, Duke of Gloucester Restaurant & Bar and Silky Oak Café, 6 cyclists or more please ensure you book ahead for wine tasting and lunch, allow 6 to 7 kms to ½ hour cycling

Headings in Red Food!	
cellardoor@missionestate.co.nz	thecellardoor@churchroad.co.nz
https://missionestate.co.nz	www.church-road.co.nz
<p>Mission Estate Winery & Restaurant 198 Church Road, Mission Cellar Door (06) 8459353 Mission Restaurant (06) 8459354 Wine tasting \$6 - includes a flight of 6 wines and a glass to take home! Opening Hours: Mon to Sat 9.am to 5pm: Sun 10am to 4.30pm Note Tasting is not available if you arrive after 4.30pm/4.00pm</p> <p><u>Private group wine tasting - must be booked in advance (Min 10pax Max 40pax)</u> \$18.20pp A flight of 6 wines for taste & commentary detailing the 160+ year history (approx. 45min) \$12.50pp A flight of 6 Wines (10 to 30 persons) Restaurant Hours 11.30am to 2.15pm Dinner from 5.30pm to late 1.7kms to Bike About Tours Base: 900m to Church Road Winery 600m to Penny Madden Ceramic Artist</p>	<p>Church Road Winery & Restaurant - 150 Church Road . Phone (06) 833 8225 <u>Bike parking behind the tall fence at the end of the long drive way</u> Opening hours: 10.30am to 4.30pm, Open 7 days, closed some public holidays Restaurant hours: 11.30am to 2.30pm (extended over summer) Platter for two \$56.95 Cellar Door Wine Tastings Provenance - \$5.00 - Taste a selection of wines from some of our signature varietals and vineyards across the region. Innovation - \$10.00 - Take the road less travelled and try some of our more unique varietals and winemaking techniques. Prestige - \$15.00 - Treat yourself by tasting some of the finest wines we have to offer. Church Road Tours - booking essential 11.00am - Versatility of the Grape Experience, 1.5 hour in length - \$70.00 per person, 3:00pm - Legacy and Winery Experience, 1 hour in length - \$35.00 per person, 900m to Mission Estate Winery: 2.1kms to Bike About Tours Base 2.2kms Duke of Gloucester and 5.kms to Silky Oak Chocolates</p>
info@silkyoakchocs.co.nz	David Perreux [mailto:david@napierbars.co.nz]
https://silkyoakchocs.co.nz	https://www.thedukeofgloucester.co.nz
<p>Silky Oak Chocolates, Museum & Café 1131 Links Road.Ph. (06) 845 0908 Mon to Thu: 9.am to 5.pm: Fri 9am to 4pm: Sat & Sun 10.am to 4.pm Museum Tour: \$8.50 adults, \$7 senior, \$5 child, and family pass \$22. Public Holidays sometimes closed - phone ahead to see if open... Café closed all Public Holidays! 3.1kms to Duke of Gloucester Restaurant & Bar for Ale & Cider 2.2kms to Riverbank Pathway: Pettigrew/Green Arena 5.1kms to Church Road Winery & 6kms to Mission Estate Winery 5.1kms to Bike About Tours base via Gloucester Street or 6.3 via EIT Pathway @ Pettigrew Green arena / Guppy Road/BAT Base</p>	<p>Ale & Cider @ The Duke of Gloucester Restaurant & Bar 389 Gloucester Street Phone 06 845 0502 <u>Bike Parking at back of complex - park near entrance door and lock the bikes please!</u> Open every day until late - fantastic outdoor area & excellent food You pay for what you consume!</p> <p>2.2kms or 3.05kms to Church Road Winery depending on route taken 3.1kms to Silky Oak Chocolates 2.kms to Bike About Tours 47 Gloucester Street</p>
<p>Trail 503: Wine & Chocolates Visit Mission Winery first 1.7kms Bike About Tours to Mission Estate 900m Mission Estate to Church Road Winery 1.3kms Church Road Winery to Puketapu Road 1.1kms Puketapu Rd /Waterhouse Street/O'Dowd Road/ Gloucester Street 2.5kms Gloucester Street to Silky Oak Chocolates 2.2kms Silky Oak Chocolates to Pettigrew Arena 1.3kms Pettigrew Arena via the Pathway/Guppy Road 2.6kms Guppy Road to Bike About Tours 47 Gloucester Street</p> <p>13.6kms Total cycled</p>	<p>Trail 503: Wine & Chocolates, Ale & Cider Visit Silky Oak Chocolates first 2.6kms Bike About Tours to end of Guppy Road 1.3kms Guppy Road to Pettigrew Green Arena 2.2kms Pettigrew Green Arena to Silky Oak Chocolates 3.1kms Silky Oak Chocolates to Duke of Gloucester Ale & Cider .700mt Duke of Gloucester vai Puketapu Road 1.3kms Puketapu Road to Church Road Winery .900mts Church Road Winery to Mission Estate 1.7kms Mission Estate to Bike About Tours -</p> <p>13.8kms Total cycled</p>



Phone (06) 845 4836 Mobile 027 232 4355
 P O Box 5115 or 47 Gloucester Street, Greenmeadows, Napier New Zealand.
 Web: www.bikeabouttours.co.nz Email: info@bikeabouttours.co.nz
 Web: www.greenmeadowsongloucester.co.nz Email: leedes@xtra.co.nz

Bike About Tours



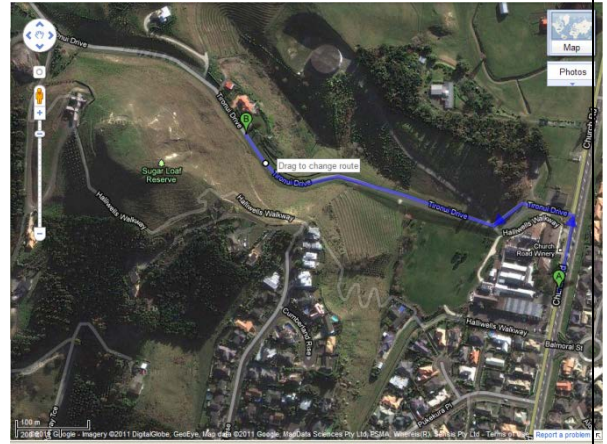
☑ Moderate fitness ☑ ☑ Medium fitness ☑ ☑ ☑ High fitness level

Numbers in brackets depicts wineries and activities location on maps. *Seasonal opening hours # Not always open

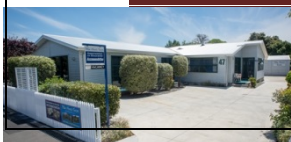
WALKING TO SUGAR LOAF RESERVE:

Leave your bike at Church Road Winery: allow 30 to 45 minutes.

1. Ask permission from the staff at Church Road Cellar Door to leave your bikes in the bike stand and walk through the Winery Park to Tironui Road
2. A little way up the hill on your left is a large paddock, also a stile to climb over that takes you into the reserve - follow the track to the summit, rewards a plenty for your effort, the four-hectare reserve affords views out over Napier, Taradale and much of the Heretaunga Plains. The Ruahine and Kaweka Ranges can be seen to the west. A survey trig station at the summit.
3. Jenne recently walked the reserve with Clubs (young girls & boys Scouts) to watch the sunrise, it was magic...
4. Enjoy the view on the way down the hill, taking the zig zag track, then into Halliwell's Walkway to Church Road Winery.



*Take care,
have fun, Hawke's Bay climate creates a year round pedal power adventure Just for you!*



Phone (06) 845 4836 Mobile 027 232 4355
P O Box 5115 or 47 Gloucester Street, Greenmeadows, Napier New Zealand.
Web: www.bikeabouttours.co.nz Email: info@bikeabouttours.co.nz
Web: www.greenmeadowsongloucester.co.nz Email: leedes@xtra.co.nz