

# Bike About Tours



☑ Moderate fitness ☑ Medium fitness ☑ High fitness level

Numbers in brackets depicts wineries and activities location on maps. \*Seasonal opening hours # Not always open

Trail 613A: Gimblett Gravels: – refer bottom of page 3 for opening hours

**Yellow ride on map** – cycle 13 kms Drop of and collection

**If you want a longer ride refer pages 2, 3, and 4 for other options**

Note opening hours: **Summer:** 10am to 5pm

Autumn – winter – spring: some wineries are not open Mon & Tue. Hours 11.00am to 4.00pm

## Option One

20kms from Napier and West of Hastings is Gimblett Gravels - Ngatarawa Triangle and Bridge Pa Triangles wine growing district, **famous** for its deep gravelly soils laid down by the old Ngaruroro River after the huge flood in the 1860's. Eighty percent of the land is planted in red grape varieties; the remaining 20% is white grape varieties.

A fabulous ride on flat terrain that is full of surprises, (bring your camera) on route you will cycle off-road through 2kms of Vineyards Discover Sileni Estate unique gourmet cellar which includes a selection of Fine New Zealand Extra Virgin Olive Oils produced locally by The Village Press. You are welcomed at all the cellar doors by passionate enthusiastic winery personal - a wide range of wine for you to discover in your glass - that showcase the regions potential and growth.

Drop of by coach at \*Sileni Estate the start of your day cycle adventure, options to visit...

\*Alpha Domus, \*Abbey Cellars & The Fat Monk Brewery, Ngatarawa and Farmgate Wines, Ash Ridge Wines \* Trinity Hill, Te Awa Winery & Restaurant, take a detour to Roys Hill Reserve - cycle to the top of the hill for a panoramic view: \*Unison Vineyard & Cafe, \*Stonecroft Wines. Additional 4.2kms to Crossroad Winery (2 on the map)

*Jenne requires a 40 minute notice in advance to come back and collect you.*

**Lunch options: Ash Ridge Wines, Te Awa Winery, Unison Vineyard Some wineries do offer platters**

**Note:** From Crossroads Winery 1747 Korokipo Road (2 on the map) to Silky Oak Chocolates the road is narrow in places - too dangerous to bike to and from our base. The Hawke's Bay Regional Council who is in charge of the new pathways is looking at an alternative route for the cyclist.



Phone (06) 845 4836 Fax (06) 845 4837 Mobile 027 232 4355  
P O Box 5115 or 47 Gloucester Street, Greenmeadows, Napier New Zealand.  
Web: [www.bikeabouttours.co.nz](http://www.bikeabouttours.co.nz) Email: [info@bikeabouttours.co.nz](mailto:info@bikeabouttours.co.nz)  
Web: [www.greenmeadowsongloucester.co.nz](http://www.greenmeadowsongloucester.co.nz) Email: [leedes@xtra.co.nz](mailto:leedes@xtra.co.nz)

# Bike About Tours



☑ Moderate fitness ☑ ☑ Medium fitness ☑ ☑ ☑ High fitness level

Numbers in brackets depicts wineries and activities location on maps. \*Seasonal opening hours # Not always open

Want a longer bike ride – Choose from the three options below

## Option Two:

Trail 613B : Pakowhai Park - Oak Avenue -Gimblett Gravels

**Flat terrain: 28 kms ride** Coach drop and collection: 90% of your ride is on Pathways

**Drop of at Pakowhai Park** , cycle the Riverbank pathway to Ormond Road (Oak Avenue) by road to Oak Avenue - 216 trees planted in the 1860 and 1900 as a drive way into the then Ormond Homestead –visit Pask Winery then join the Cycle Pathway via Flaxmere, Stock Road, Maraekakaho Road, stop of for a cuppa & scone at the Hastings Golf Course - Bunkers Café, continue on the pathway to the Village of Bridge Pa for the start of your /Gimblett Gravels Cycle ride. Discover and taste numerous world renowned handcrafted wines produced in this famous wine growing area.



### Wineries to visit include

Abbey Cellars & The Fat Monk Brewery, Alpha Domus, Sileni Estate, Ashridge Vineyard & Café, Ngatarawa Wines, Trinity Hill, Te Awa Wines & Restaurant, Unison Estate and Stonecroft Wines.

**Additional 4.2kms** to Crossroad Winery (2 on the map)

**Note: Summer:** 10am to 5pm

**Winter:** some wineries are not open Mon & Tue. Hours 11.00am to 4.00pm

## Option Three Longer ride

- **Flat terrain: 28 kms ride**, Coach drop and collection: 90% of your ride is on Pathways

Trail 613C: Pask Winery - Oak Avenue – River bank pathway to Fernhill - Gimblett Gravels

**Coach drop off at C J Pask Winery** , then a short cycle to Oak Avenue - this avenue of mature Oak trees were planted in the 1860 - 100 spaces apart , in 1900 more Oak Tree were planted. On arrival at the Riverbank Pathway turn left and continue on to the Village of Fernhill, turn left to join the pathway to Gimblett Gravels. Discover and taste numerous world renowned handcrafted wines produced in this famous wine growing area.

### Wineries to visit

**\*Stonecroft Wines, \*Unison Estate & Café for a well earned cuppa, then to Te Awa Wines, Trinity Hill, , Ngatarawa Wines, Ash Ridge Wines, Sileni Estate, \*Alpha Domus,\* Abbey Cellars & The Fat Monk Brewery .**

**Note:**

**Summer:** 10am to 5pm

**Winter:** some wineries are not open Mon & Tue. Hours 11.00am to 4.00pm



Phone (06) 845 4836 Fax (06) 845 4837 Mobile 027 232 4355  
P O Box 5115 or 47 Gloucester Street, Greenmeadows, Napier New Zealand.  
Web: [www.bikeabouttours.co.nz](http://www.bikeabouttours.co.nz) Email: [info@bikeabouttours.co.nz](mailto:info@bikeabouttours.co.nz)  
Web: [www.greenmeadowsongloucester.co.nz](http://www.greenmeadowsongloucester.co.nz) Email: [leedes@xtra.co.nz](mailto:leedes@xtra.co.nz)

# Bike About Tours



☑ Moderate fitness ☑ Medium fitness ☑ High fitness level

Numbers in brackets depicts wineries and activities location on maps. \*Seasonal opening hours # Not always open

## Option Four

Longer ride Flat terrains - bike one way

42kms afternoon collection

Trail 613D: Gimblett Gravels

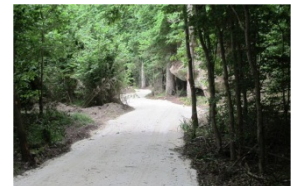
Bike about Tours base – Silky Oak Chocolates – Springhill or Omarunui Riverbank pathway - Swamp Road – Fernhill - Gimblett Gravels

Follow the Green and double purple loop (blue line- river in between) then long purple line (Swamp Road then join the yellow ride



**Highlights:** Connect mind body and soul and enjoy nature's peaceful surroundings

**From Bike About Tours** base follow the green line to the **Tutaekuri Riverbank**. cross the bridge and make way to Silky Oak Chocolates, return and cross back over the bridge to join the Springhill Riverbank pathway to Moana Park Vineyard then to Puketapu Village, refreshments at the Puketapu Hotel (closed Mondays) onto Vicarage Road then to Swamp Road, Fernhill and **Gimblett Gravels**



Wineries to visit

**Crossroads Winery, \*Stonecroft Wines, \*Unison Estate & Café** for a well earned cuppa, then to **Te Awa Wines, Trinity Hill, , Ngatarawa Wines, Ash Ridge Wines, Sileni Estate, \*Alpha Domus, \*Abbey Cellars & The Fat Monk Brewery** .

*Note: From Crossroads Winery 1747 Korokipo Road (2 on the map) to Silky Oak Chocolates the road is narrow and is too dangerous to bike The Hawke's Bay Regional Council who is in charge of the new pathways is looking at an alternative route for the cyclist*

Note:

**Summer:** 10am to 5pm

**Winter:** some wineries are not open Mon & Tue. Opening Hours vary 10am to 11.00am to 4.00 to 4.30pm

**Note:**

\*Sileni Estate: Summer open 7 days 10 to 5pm: Winter Wed to Sun 10 to 4pm

\*Alpha Domus: Open 7 days Sep to 1<sup>st</sup> weekend in June. Winter closed.

\*Abbey Cellars: Summer 7 days, winter open Fri to Sun 10 to 5pm.

Ngatarawa and Farmgate Wines: Summer open 7 days 10 to 5pm - Winter 10 to 4pm

\*Trinity Hill: Summer open 7 days 10 to 5pm Winter Wed to Sun 11 to 4pm.

Te Awa Winery & Restaurant: open 7 days 10 to 4pm Closed Public Holidays.

\*Unison Vineyard: Peak summer 7 days late summer days can vary Wed to Sun.

Winter: Jun to September, open Fri & Sat Sun sometimes they close in August!

\*Stonecroft Wines: Labour weekend to Easter, open Sat, Sun, winter closed.

Crossroads Winery 7 days 11 40 4.30pm

**Note: Some wineries charge wine tasting fees and some are closed on public holidays**

**Lunch options: Sileni Estate, Ash Ridge Café, Te Awa Wines & Restaurant, Unison Café**



Phone (06) 845 4836 Fax (06) 845 4837 Mobile 027 232 4355

P O Box 5115 or 47 Gloucester Street, Greenmeadows, Napier New Zealand.

Web: [www.bikeabouttours.co.nz](http://www.bikeabouttours.co.nz) Email: [info@bikeabouttours.co.nz](mailto:info@bikeabouttours.co.nz)

Web: [www.greenmeadowsongloucester.co.nz](http://www.greenmeadowsongloucester.co.nz) Email: [leedes@xtra.co.nz](mailto:leedes@xtra.co.nz)

# Bike About Tours



☑ Moderate fitness ☑ Medium fitness ☑ High fitness level

Numbers in brackets depicts wineries and activities location on maps. \*Seasonal opening hours # Not always open



**ROYS HILL RESERVE – Near Unison Vineyard HISTORY:** The Roy’s Hill refuse disposal site was established in 1954 by the Hastings Borough Council. The site had previously been a gravel quarry. The landfill was closed to general dumping in December 1988 when the new site at Omarunui commenced operation. The site continued to be used for clean hard fill disposal until August 2000, with this material being used to form a relatively impermeable cap and to contour the area. The 10.97 hectare site laying over the unconfined aquifer the site is a very sensitive environment that requires special care and attention. Regular site monitoring and investigation work is carried out, involving routine groundwater monitoring and annual compliance reports.

In 2002 the Landmarks Trust and Council recognized the potential of the site to become an enhanced area of open space, although restoration could not commence until the reshaping of the cap was complete. Construction work on the Roy’s Hill Closed Landfill cap was completed in 2006.

In 2007 Council approved the development of the site as public open space, with managed transition for public access. In 2009/10 over 3000 plants were planted by the community, and the cap was grassed and ready for the first Harvest Hawke’s Bay event held in early 2010. There are ongoing plans for planting native vegetation, and improving the track network. The remaining project work in the reserve includes: · establishment of native planting · building a circular walkway · formalizing a recreational and event area · constructing a car park · construction of viewing platforms

Council wishes to thank the sponsors whose generous contributions and assistance have ensured the success of this project.



Phone (06) 845 4836 Fax (06) 845 4837 Mobile 027 232 4355  
 P O Box 5115 or 47 Gloucester Street, Greenmeadows, Napier New Zealand.  
 Web: [www.bikeabouttours.co.nz](http://www.bikeabouttours.co.nz) Email: [info@bikeabouttours.co.nz](mailto:info@bikeabouttours.co.nz)  
 Web: [www.greenmeadowsongloucester.co.nz](http://www.greenmeadowsongloucester.co.nz) Email: [leedes@xtra.co.nz](mailto:leedes@xtra.co.nz)