

Bike About Tours



☑ Moderate fitness ☑ ☑ Medium fitness ☑ ☑ ☑ High fitness level

Numbers in brackets depicts wineries and activities location on maps. *Seasonal opening hours # Not always open

OUR MOST POPULAR CYCLE TRAIL FROM NAPIER

Wineries Ride: ☑ Trail 501 & ☑ Trail 503:

Follow the brown line on map

Something for everyone: Napier Historic Wineries, Attractions, Pathways.



Refer to script for numbers in brackets.

Trail 501: Napier Historic Wineries: cycle 23 to 39kms

Trail 503: Napier Historic Wineries & Chocolates Cycle 3 to 14 kms

	The Filter Room - Beer & Cider Blue dot with white in the middle - near Awatoto	27	Church Road Winery Leave your bike locked at Church Road Winery Walk via Tironui Drive to Sugar Loaf Reserve for a fantastic view of the surrounding area return via Halliwells Walkway to Church Road Winery
26	Brookfield's Vineyard	28	Mission Estate Winery
	Silky Oak Chocolates – Follow brown line Blue dot with white in the middle - middle of map		Bike About Tours Base- 47 Gloucester Street
29	*Moana Park Winery is now accessible via the Springfield Riverbank pathway.		PUKETAPU Quaint Country Puketapu Pub
	You can ride extra kms along the riverbank to the sea and return inland at Awatoto to the Filter Room		



Phone (06) 845 4836 Fax (06) 845 4837 Mobile 027 232 4355
P O Box 5115 or 47 Gloucester Street, Greenmeadows, Napier New Zealand.

Web: www.bikeabouttours.co.nz Email: info@bikeabouttours.co.nz

Web: www.greenmeadowsongloucester.co.nz Email: leedes@xtra.co.nz

Bike About Tours



Moderate fitness Medium fitness High fitness level

Numbers in brackets depicts wineries and activities location on maps. *Seasonal opening hours # Not always open

Trail 501: Napier Historic Wineries

Something for everyone - Our most popular Trail in the Napier area

**Flat terrain: Cycle 23 to 39 kms allow 4 to 6 hours, a pleasant ramble along flat terrain.
5 minute cycle from our base to Mission Estate and Church Road Winery.**

Wineries: Mission Estate Winery, Church Road Winery Moana Park Winery,
The Filter Room - Boutique Ale & Cider House & Hops Café, #Brookfield's Vineyard,

Note: Puketapu Hotel is open every day from 11.00am Mondays only from 3.00pm onwards
The Filter Room : Summer Dec to Mar closed Mondays - Winter Apr to Nov closed Mon & Tue
Phone Brookfields in advance – not always open

Attractions: Silky Oak Chocolate Company, Tree stump carving of golf players, #Waiohiki Arts & Crafts, #Bay Wood Turney, #Nevaria Lavender, Quaint Country Puketapu Hotel, #Historic Church, Puketapu Park for a ride on the flying fox, #Penny Madden's Ceramic Studio.

WALKING LOOP (see map on page 3) Leave bikes at Church Road Winery: Walk via Tironui Drive to **Sugar Loaf Reserve** which takes you the summit for fantastic views, return via Halliwell's Walkway to Church Road Winery - allow 30 minutes return

Lunch options: Church Road Winery, Mission Estate Winery and Silky Oak Café, #The Filter Room and Hops Café, #Puketapu Hotel

Trail 503: Wine and Chocolates. 3 to 14 kms

Flat terrain: allow 2 to 4 hours: 5 minute cycle from our base to Mission Estate & Church Road Winery. Pleasant ramble along flat terrain with pathways on the road and riverbank pathways.

Wineries: Mission Estate, Church Road Winery,

Attraction: Silky Oak Chocolate Company, Penny Madden Ceramic Studio,
Tree stump carving of golf players, #Waiohiki Arts Crafts, # Bay Wood Turney, # Nevaria Lavender

WALKING LOOP see map on page 3: Leave bikes at Church Road Winery: Walk via Tironui Drive to **Sugar Loaf Reserve** which takes you the summit for fantastic views, return via Halliwell's Walkway to Church Road Winery - allow 30 minutes.

Lunch options: Church Road Winery, Mission Estate Winery and Silky Oak Chocolates Cafe.

Note: Mission Estate Winery: Mon to Sat 9 to 5pm Sun 10 to 4.30pm.

Church Road Winery: Daily 10.30am to 4.30pm.

Moana Park Winery: Summer 10 to 5pm Winter 10 to 4pm

Silky Oak Chocolates & Café : Mon to Thu 9 to 5pm –Fri, Sat, Sun 9 to 4pm

The Filter Room & Café & Puketapu Hotel – see above in brown print.

Brookfields Vineyard: 10 to 4pm – note always open – phone prior to visit!

Note: Some wineries are closed on Public Holidays



Phone (06) 845 4836 Fax (06) 845 4837 Mobile 027 232 4355
P O Box 5115 or 47 Gloucester Street, Greenmeadows, Napier New Zealand.

Web: www.bikeabouttours.co.nz Email: info@bikeabouttours.co.nz

Web: www.greenmeadowsongloucester.co.nz Email: leedes@xtra.co.nz

Bike About Tours



☑ Moderate fitness ☑ ☑ Medium fitness ☑ ☑ ☑ High fitness level

Numbers in brackets depicts wineries and activities location on maps. *Seasonal opening hours # Not always open

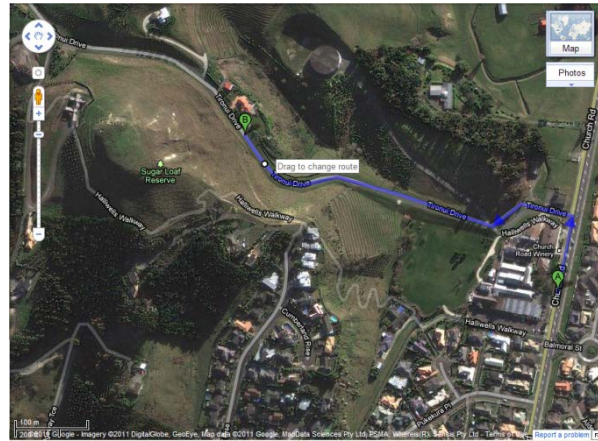
WALKING TO SUGAR LOAF RESERVE:

(56B) Leave your bike at Church Road Winery: allow 30 to 45 minutes.

1. Ask permission from the staff at Church Road Cellar Door to leave your bikes in the bike stand and walk through the Winery Park to Tironui Road
2. From the Cellar door turn left and walk between the building to the large Winery Park, once pasted the building turn right and make you way through the Park to Tironui Drive – a little way up the hill on your left is a large paddock, also a stile to climb over that takes you into the reserve - follow the track to the summit, rewards a plenty for your effort, the four-hectare reserve affords views out over Napier, Taradale and much of the Heretaunga Plains. The Ruahine and Kaweka Ranges can be seen to the west. A survey trig station is established at the summit.

3. Jenne recently walked the reserve with Clubs (young girls & boys Scouts) to watch the sunrise, it was magic...

4. Enjoy the view on the way down the hill, taking the zig zag track, then into Halliwells Walkway to Church Road Winery.



WESTERN HILL CEMETERY LOOKOUT

Gates open at 8:00am and close at sunset. Toilets open 8:00am to sunset.

Detour of the cycle pathway on Prebensen Drive, into Orotu Park, turn right into Clyde Jeffery Drive, look for the brown palings on either side of the gate way on your left, this is the drive way into Napier's newest, cemetery - Western Hills, opened in 1985. Note as you climb the hill the rock wall which has heaps of sea shells embedded into the rock. Once at the top of the hill continue cycling until the road ends, The northern crest, topped by a trig point, offers extensive views of farmland and the suburbs of Napier. Before the earthquake of 3 February, 1931, this low-lying expanse was covered by the waters and mudflats of the great Ahuriri Lagoon. The cemetery's sweeping lawns were formerly orchards, paddocks and vegetable gardens.

The other road to your left takes you into Park Island Cemetery to view the Memorial for 143 people who lost their lives in the 1931 earthquake

ANDERSON PARK: The city's largest passive recreation park was once the home of the Napier Park Racing Club, formed at Greenmeadows in 1886. Racing ceased here in about 1960 when the club moved to Hastings for race days.

The Council acquired the old racecourse site in 1962 under the Public Works Act. Development work got underway in 1966 with the formation of over two hectares of waterways.

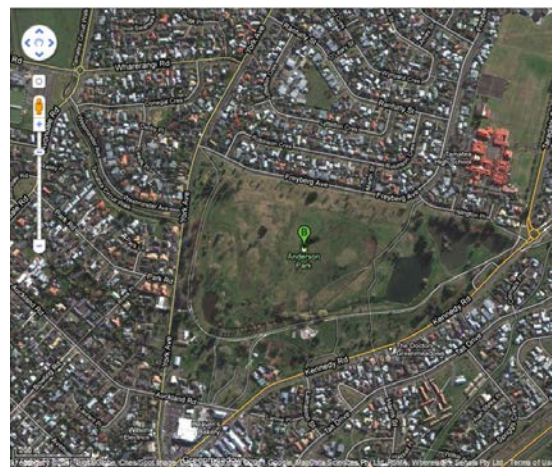
Tree planting and ground formation work was done to improve surface drainage and create an interesting landscape on an otherwise flat site. Before the 1931 earthquake, several saltwater creeks crossed the park area, leaving a legacy of salt-laden soils. That, in turn, has influenced the choice of trees and helped determined where they should be planted.

The children's play area was developed jointly with the Napier Lions Club, and parking areas were created at key points.

A \$40,000 bequest from the late Haskell Anderson was a considerable help in developing the park. In particular, the funds have seen the establishment of as wide a selection of trees as possible.

Combined pedestrian and cycle paths created in 1980 have greatly boosted the public's use and enjoyment of the park.

Refer map for concrete cycling pathways, the children's playground is directly below the green sign on the map (Anderson Park) you can see the concrete for skateboarding. Toilets' are to the left of the playground



*Take care, have fun,
Hawke's Bay climate creates a year round pedal power adventure,
Just for you!*



Phone (06) 845 4836 Fax (06) 845 4837 Mobile 027 232 4355
P O Box 5115 or 47 Gloucester Street, Greenmeadows, Napier New Zealand.

Web: www.bikeabouttours.co.nz Email: info@bikeabouttours.co.nz

Web: www.greenmeadowsongloucester.co.nz Email: leedes@xtra.co.nz